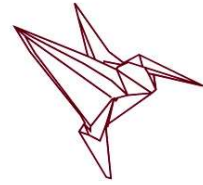




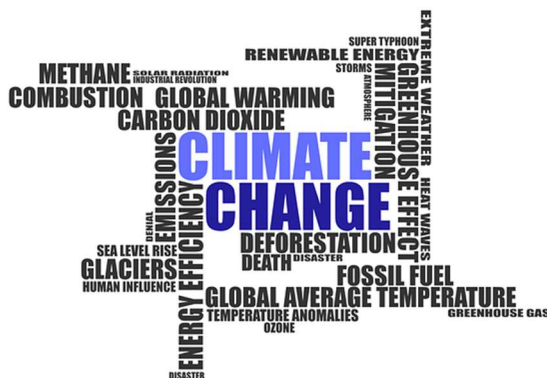
**Community First**  
**Yorkshire**



CoLibra

# **Climate Action Projects: A snapshot of the range of community based climate action projects, activities and assets across the North Yorkshire Moors National Park and Scarborough.**

3 January 2023



## TABLE OF CONTENTS

<b>SECTION</b>	<b>PAGE</b>
1. Executive Summary	2
2. Introduction	3
3. Methodology	7
4. Findings	8
- Latent demand	8
- Barriers	9
- Support needs	10
5. Climate action projects/activities	11
- Climate mitigation projects/activities	12
- Climate adaptation projects/activities	17
- Climate adaptation information provision	19

### List of figures and tables

<b>Title</b>	<b>Page</b>
Figure 1 – North Yorkshire Moors National Park Authority Area	6
Figure 2 – Scarborough Map	6
Table 1 - Interest/appetite in knowing more about climate change	9
Table 2 - Reported barriers to undertaking climate change activities	9
Table - 3 Support needs	10

### Appendices

Appendix 1 - Copy of the introductory email and survey questions

Appendix 2 - List of stakeholders, partner organisations and funders

## **1. EXECUTIVE SUMMARY**

---

This research sought to uncover examples of community based climate action projects being delivered in the North Yorkshire Moors National Park and Scarborough. The research also sought to assess the likely appetite amongst community based organisations for undertaking climate action projects and to identify any challenges, barriers and future support needs. The findings are drawn from a Survey conducted during September 2022.

A diverse range of activities were uncovered, ranging from a community owned hydro energy scheme generating renewable energy, projects tackling single use plastics, carbon capturing community managed woodlands, village halls/community buildings installing renewable energy systems, tree planting and coppicing projects, wildflower planting, clothes recycling and repurposing, furniture recycling and upcycling, waste swaps, exhibitions and workshops to raise awareness of environmental issues, campaigns for cycling networks and those providing advice, information and support for climate action projects.

## 2. INTRODUCTION

---

As we bear witness to more extreme weather conditions, from flooding to droughts, tropical storms to melting glaciers, hotter, dryer summers and shorter, milder winters we are all increasingly aware of climate change. Climate change is not just an environmental issue, it is also a health issue, an equality issue, an educational issue, an economic issue, a cultural issue, a scientific issue, a security issue and a local community issue.

Throughout the UK, thousands of community groups have already developed practical and inspiring examples of how to tackle climate change, from waste food cafes, to repair shops, to ambitious community energy schemes. These are powerful projects that help to connect and empower people, bring unlikely partnerships to life, and help to normalise sustainable behaviour as part of everyday life.

These community-led responses to climate change can be powerful forces for good and offer unexpected benefits, way beyond a simple reduction in carbon emissions and a better, cleaner, greener environment. These 'co-benefits' include such things as: helping to improve community cohesion and reductions in loneliness by connecting people around a common goal, organising meetings, and building supportive networks; positive health and wellbeing dividends as a result of improved air quality through reduced use of combustion engine vehicles or increased activity through people walking or cycling more; reduced fuel poverty from more energy-efficient homes; equity and social inclusion through focussing on the most vulnerable in society, such as action to alleviate fuel poverty. Investing in initiatives to reduce carbon emissions can also create a wealth of economic opportunities and jobs in the low carbon economy. Overall, community climate action has the potential to enable innovative and systemic change and is a critical part of the move towards a net-zero carbon society.

In July 2022, the North Yorkshire Moors National Park Authority launched its twenty year plan addressing nature recovery, climate change and health and wellbeing. This collective vision included bigger and better wildlife habitats, a flourishing net zero carbon economy and thriving local communities.

In 2019 Scarborough became one of the first Councils in the country to declare a climate emergency and it has pledged to do everything it can to make the borough of Scarborough carbon neutral by 2030. In 2021 Scarborough produced its Climate Change Strategy which sets a number of aims and aspirations that seek to embed green thinking in every decision, policy and action.

CoLibra was commissioned by Community First Yorkshire in June 2022 to undertake research to better understand:

- (i) the range of current climate action activities within communities across the North Yorkshire Moors National Park Authority and Scarborough and;

- (ii) the appetite, barriers and enablers for communities wanting to implement and deliver climate action activities.

For the purposes of this research three categories of climate change activities were identified:

- (a) ***Climate change mitigation*** – activities which make the impacts of climate change less severe by preventing or reducing the emission of greenhouse gases (GHG) into the atmosphere. For example, renewable energy schemes, installation of electric vehicle (EV) charging points, diverting food from landfill, environmentally sustainable buildings, green roofs, energy audits and working towards being a carbon neutral community.
- (b) ***Climate change adaptation*** – activities which anticipate the adverse effects of climate change and take appropriate action to prevent or minimise the damage they can cause. For example, creating wildlife friendly spaces, building flood defences or tree and forest planting schemes to capture and store carbon.
- (c) ***Raising awareness of climate change*** – activities which provide advice and information, signposting and referrals. For example, Energy doctor schemes, encouraging SMART meter roll-out, campaigns that get everyone talking about climate change or lobbying for climate change action.

The geographical scope of the research was limited to the North Yorkshire Moors National Park and Scarborough, as a condition of the grant from the Woodsmith Foundation (formerly the Sirius Foundation) which funded this piece of work.

### **North Yorkshire Moors National Park Authority Area**

The North Yorkshire Moors National Park is one of the largest expanses of heather moorland in the United Kingdom. It covers a large rural area of 1,436 km<sup>2</sup> (554 square miles) and has a population of about 25,000 spread across twelve towns and villages. Woodland and forests cover about 23% of the National Park and it has one of the largest concentrations of ancient and veteran trees in northern England. There are over 700 Scheduled Monuments within the North York Moors and around 3,000 listed buildings. Almost a third of the Scheduled Monuments for the Yorkshire & Humber region can be found in the National Park. Around 8.38 million people visit the North York Moors every year. Forty three percent of the North York Moors lies within the Borough of Scarborough, 38% within Ryedale, 15% within Hambleton and 4% within Redcar & Cleveland.

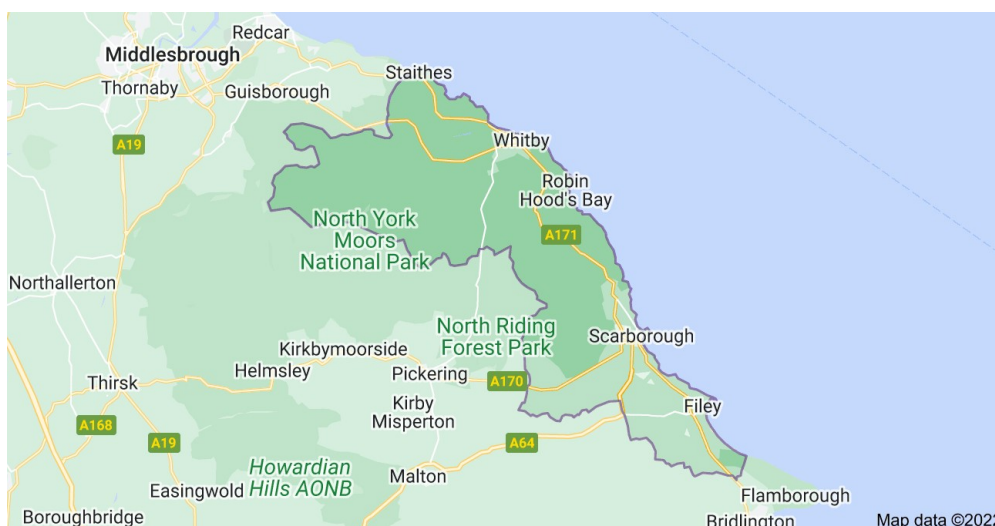
**Figure 1: North Yorkshire Moors National Park Authority Map**



## Scarborough

Scarborough is a non-metropolitan district and borough of North Yorkshire, England. In addition to the town of Scarborough, it covers a large stretch of the coast of Yorkshire, including Whitby and Filey and has a population of around 108,000. Scarborough is the largest holiday resort on the Yorkshire Coast and largest seaside town in North Yorkshire. The town has fishing and service industries and growing digital and creative economies, as well as being a tourist destination.

**Figure 2: Scarborough Map**



### 3. METHODOLOGY

---

The commission began with an inception meeting with Victoria Russell, Head of Projects at Community First Yorkshire. The purpose of which was to: obtain key background information and contact details; finalise the workplan, timescales and reporting protocols and to align expectations from the start. This was followed by a desk-based review of relevant background and contextual information for the commission and to develop a list of key stakeholders, partner organisations and funders who might be able to assist in the research.

A short questionnaire was developed and the questions were signed off by the client. The questionnaire was subsequently transferred into Survey Monkey and a hyperlink embedded in an accompanying email. Invitations to complete the Survey were circulated in two ways:

- (i) Personalised invitations were sent to twenty two stakeholders, partner organisations and funders asking for their assistance in circulating the invitation to complete the survey amongst their constituencies. (Please see Appendix 1 for the email and Survey questions). Initial invitations were circulated on 7<sup>th</sup> September and reminders were sent on the 19<sup>th</sup> September. The closing date for the Survey was 30<sup>th</sup> September 2022.
- (ii) Community First Yorkshire promoted the survey amongst their networks and via their weekly Friday e-zine (Friday 9<sup>th</sup>, 16<sup>th</sup> and 23<sup>rd</sup> September 2022) which has a circulation list of 997 contacts across Ryedale and Scarborough (888 voluntary, community and social enterprise (VCSE) contacts and 109 village hall/community building contacts).

Quantitative and qualitative data analysis of the Survey findings was undertaken and follow up emails/telephone calls were undertaken with several respondents who had given their permission to be contacted.

A draft report was produced for the client and following feedback a final version was produced.

## 4. FINDINGS

---

Thirty survey responses were received. Based on the National Council for Voluntary Organisations (NCVO) estimates of an average of 2.5 VCSE organisations per 1000 population county for England, a conservative estimate of the number of VCSE organisations across the North Yorkshire Moors National Park Authority area and Scarborough would be 270. So 30 responses would represent an 11% response rate.

Of the 30 responses received, 66% (N. 20) reported delivering climate change activities and 27% (N. 8) said they were not currently delivering any climate change actions but were interested in knowing more. Three percent (N. 2) of respondents said they were not interested in climate change and did not think it was an issue.

Of those delivering climate action projects, 50% (N.10) said they were delivering climate mitigation activities, 15% (N. 3) climate adaptation activities and 35% (N. 7) awareness raising activities.

### **Willingness to support others, share information, knowledge and expertise**

Seventy three percent (N. 16) of those already delivering climate action projects said they would be willing to support others to develop climate action projects and activities. These offers of help demonstrate an encouraging, collegiate and enabling approach amongst those already delivering climate action. Offers of help included:

- Providing investment (i.e. a mix of grants & loans)
- Funding climate change mitigation
- Providing space within a shop and co-working to generate new ideas
- Sharing knowledge and skills in woodland management and creation
- Trialling and piloting the planting of new tree species that may be more resilient to climate change, pests and diseases.
- Provision of outdoor space for events and meetings
- Offering visits and giving talks about climate change activities, experiences, systems and impacts
- Training events to support groups/individuals/corporates connect with nature and woodlands
- Advice about Green energy and referrals to support networks/groups
- Knowledge on how to restore local historic gardens
- Information, project planning and support in completing external funding bids
- Advice and volunteers
- Sharing knowledge about ground and air source heat pumps and solar panels
- Support in linking sporting/physical activities with climate action
- Talks and support for other environmental groups just starting out to share knowledge about how to go about creating coordinated/joined up approaches
- Peer support and mentoring



- Supporting groups through the Community Hydro Forum

### Latent demand

There was both an interest in and appetite for knowing more about climate action amongst survey respondents not currently delivering climate action projects or activities. The two areas most cited were knowing more about how to implement climate change adaptations and support with networking to create a movement of climate change across North Yorkshire.

**Table 1 Interest/appetite in knowing more about climate change**

Level of interest	Areas of interest
72%	Knowing more about how groups or organisations could implement climate change adaptations
72%	Support with creating connections between existing environmental VCSE organisations and the wider sector to create a movement of climate change action across North Yorkshire
57%	Finding out about local climate change networks, projects or activities
36%	Understanding more about climate change mitigation

### Barriers to climate change activities

Respondents reported a wide range of perceived barriers to delivering and implementing more climate action projects and activities. The most frequently cited barriers related to funding, costs, staff time and organisational/group capacity.

**Table 2 Reported barriers to undertaking climate change activities**

Barriers	%
Funding and costs	27%
Staff time and capacity	24%
Individual/community resistance to change	14%
Lack of enabling environments and infrastructure including: Local Council allowing building on greenfield sites, lack of green transport corridors, Government policy, landowner buy-in and capacity of the grid to undertake projects related to community energy generation and adding EV charging point	11%
Lack of volunteers to support delivery	8%
Knowledge and knowing where to go for support	8%
Miscellaneous including: the maturity of carbon markets, Positive action and leadership. No designated group or individual to pursue it, leading to inaction, and having a building which is 100 years old.	8%

## Support needs

Several support needs were identified by respondents. These have been grouped together in the table below, however the full list of responses can be found below Table 3. Funding was the largest single barrier and the most cited area of support needed.

**Table 3 Support needs**

<b>Support need</b>	<b>%</b>
Funding and resources	32%
Marketing and communications support	18%
Access to information and advice	18%
Partnership working	11%
Miscellaneous	21%

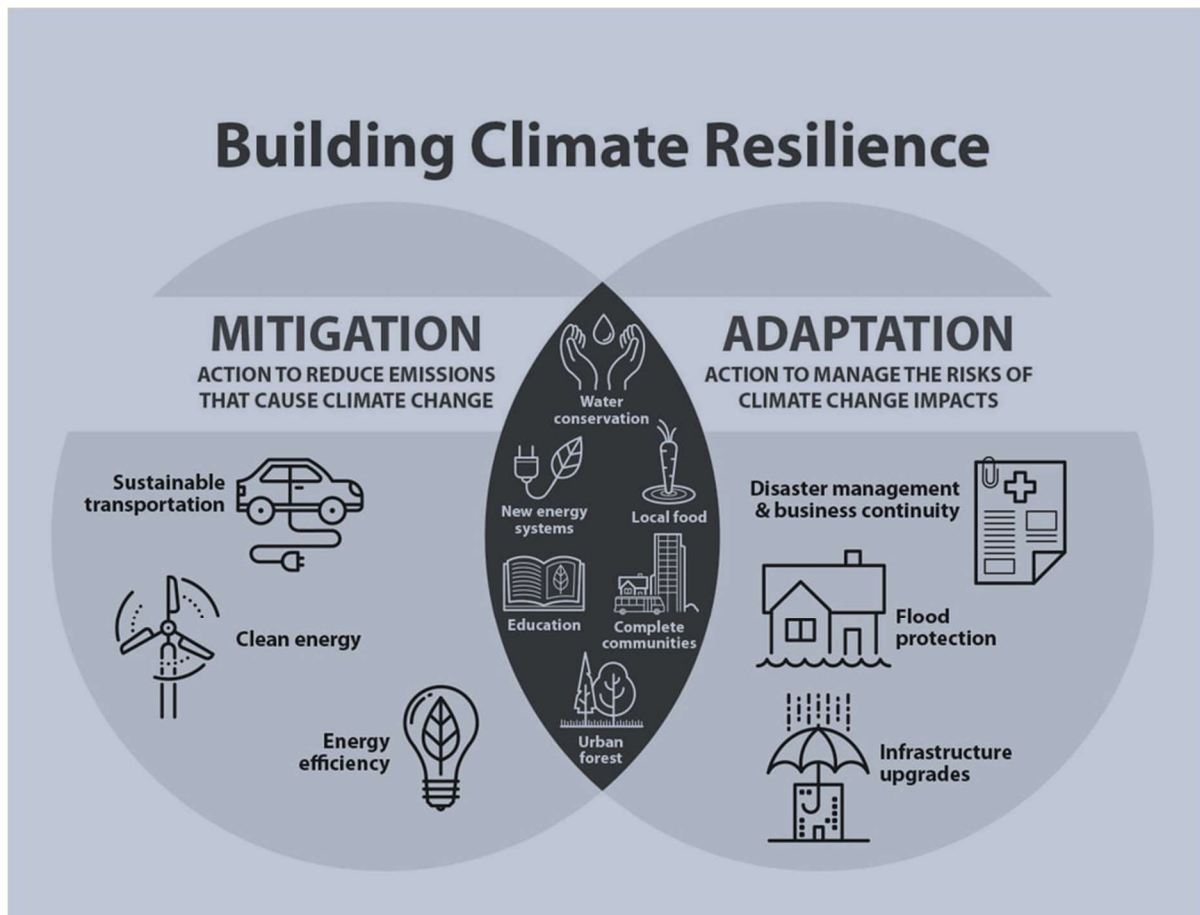
- Promotion of our work and vision in the local area
- Support with generating income from running workshops so we would be able to dedicate staff resources to this area
- Connections and networking
- Inspiration and belief that it is making a difference
- Ideas and support for future creative activities that promote environmental action
- Small capital grants to set up a pilot future forests tree planting trial
- Funding information
- If we were able to employ an extra staff member we could really expand our work on climate action and would be able to scale up supporting others to do the same
- Financial support for carbon footprint reduction work
- Access to funding
- Funding availability
- Funding
- Access to grants
- Funding to implement improvements that will reduce our carbon footprint
- An assessment and improvement suggestions for our proposed decarbonisation, the equipment that we plan to use and information on suppliers of equipment and installation
- Minibus hire would enable us to support participants to access the site
- More government emphasis on green energy
- More volunteers
- Support with deciding on legal structures - Limited company or Community Interest Company (CIC) etc
- Help with admin tasks
- Advice
- Access to good, clear online and official resources and explanations for those needing more information at a basic level
- Greater understanding of the subject
- Knowledge of where to look for help

- Information, advice and guidance
- Either more staff or greater liaison with staff employed by the new County Council
- Support from local Councils
- Support to run local projects with small groups of girls aged 4-17 years

## 5. RANGE OF CLIMATE ACTION PROJECTS

Summary information from respondents currently delivering climate action projects and who agreed for their contact details to be included in this report are provided below.

Responses came from organisations directly delivering climate action projects as well as those supporting VCSE organisations to do so, through the provision of grants, loans, advice and information. Respondents comprised groups and organisations large and small, ranging from those run by volunteers, to those staffed and part of larger networks/organisations.



## CLIMATE MITIGATION PROJECTS/ACTIVITIES

### Esk Energy (Yorkshire) Ltd



The Whitby Esk Energy – Ruswarp Hydro is a community owned 50-kilowatt Archimedes screw hydroelectric turbine on the River Esk at Ruswarp near Whitby in North Yorkshire. The scheme is run by volunteers through Esk Energy (Yorkshire) Limited – a registered society. Their main aim is to reduce the carbon footprint of the Esk Valley through generating renewable energy.

Website: [www.whitbyeskenenergy.org.uk](http://www.whitbyeskenenergy.org.uk)  
 Contact: Caryn Loftus  
 Email: [admin@whitbyeskenenergy.org.uk](mailto:admin@whitbyeskenenergy.org.uk)

### Climate Action Stokesley

<p>Saturday 19<sup>th</sup> November 2022</p> <h1 style="margin: 0;">REPAIR</h1> <p style="font-size: small;">swainby.org.uk</p>	
<p style="writing-mode: vertical-rl; transform: rotate(180deg);">Saturday 19<sup>th</sup> November 2022</p> <h1 style="writing-mode: vertical-rl; transform: rotate(180deg);">CAFE</h1> <p style="font-size: small;">swainby.org.uk</p>	<p><b>WHAT DO YOU DO WITH</b>              a computer that's slow?              a phone that won't charge?              clothes that need mending?              broken crockery and ornaments?</p> <p><b>REPAIR CAFE IS</b>              repairing broken items together, professional advice,              encounters and inspiration</p> <p><b>COSTS?</b>              A voluntary contribution</p> <p><b>WHERE?</b>              Location: Swainby Village Hall    <a href="https://swainby.org.uk">https://swainby.org.uk</a>              Address: 30 High Street              Place: Swainby, DL6 3EG</p> <p><b>WHEN?</b>              Date: Saturday 19<sup>th</sup> November 2022              From: 10am to 12pm</p> <p style="font-size: x-small;">CLOTHES • FURNITURE • ELECTRICAL APPLIANCES • TOYS • BICYCLES • ETCETERA  <a href="http://swainby.org.uk">swainby.org.uk</a>    <a href="http://repaircafe.org/en">repaircafe.org/en</a>    <a href="http://climateactionstokesleyandvillages.org">climateactionstokesleyandvillages.org</a></p>

A voluntary group which aims to help communities in Stokesley and surrounding villages to take action on climate change by supporting and developing local initiatives to reduce carbon emissions or adapt to the changing climate. They run a food share scheme taking surplus food from the local Coop and giving it to those in need. They have established a Refill Scheme and attracted ten new venues that are happy to accept re-usable cups for hot drinks and refill water bottles. They have also contacted all local schools regarding the Solar for Schools project. They have received funding for a cycle shelter at Great Ayton station and have worked with the Glove and Discovery Centre supporting recycling. They are also coordinating a project working on an active travel route – the Endeavour Way, between

Great Ayton and Stokesley. Although their time and capacity are limited they are supporting other groups who are just starting out and are working with the local council to develop a co-ordinated approach across North Yorkshire.



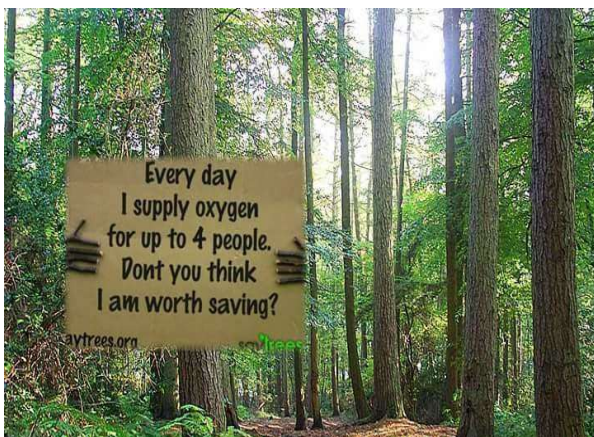
Website: [www.climateactionstokesleyandvillages.org](http://www.climateactionstokesleyandvillages.org)  
Contact: Caryn Loftus  
Email: [climateactionsav@gmail.com](mailto:climateactionsav@gmail.com)

### **Key Fund Investments Limited**

The Key Fund is a community development finance institution which invests in community and social enterprises working across the North of England and the Midlands by providing a mix of grants and loans. One of their priority areas for support is around environmental activity and they have previously supported renewable energy schemes, projects to retrofit buildings and recycling/re-use projects.

Website: [www.thekeyfund.co.uk](http://www.thekeyfund.co.uk)  
Contact: Matt Smith  
Email: [matt.smith@thekeyfund.co.uk](mailto:matt.smith@thekeyfund.co.uk)

### **Raincliffe Wood Community Interest Company**



Raincliffe and Forge Valley Woods are the largest community managed woodland in England. The 222 hectare woodland on the edge of Scarborough provides a sanctuary for nature and people looking to escape the stresses and pressures of modern day life, contributing to the improved health and wellbeing of the community. Their vision is for a thriving community woodland and landscape, loved and valued by the community and cared for by a financially sustainable membership owned business.

Their mission is to protect and enhance the woodland and its biodiversity for the benefit of all and to develop a business model that enables the enterprise to do this. Their values are: care for the environment; inclusivity; partnership and collaboration; expertise and innovation; inspiring people; responsibility and sustainability.

Their climate action activities include managing one of the largest carbon sinks in Scarborough – Raincliffe Wood and enhancing ecosystem services to promote climate change resilience for both nature and people.

They are able to: share their knowledge and skills in woodland management and creation; trial and pilot the planting of new tree species that may be more resilient to climate change, pests and diseases and provide an interesting outdoor location for events and meetings.

Website: [www.raincliffewoods.co.uk](http://www.raincliffewoods.co.uk)  
Contact: Paul Thompson  
Email: [p.thompson@raincliffewoods.co.uk](mailto:p.thompson@raincliffewoods.co.uk)

### **North Yorkshire Moors National Park Authority**

The North Yorkshire Moors National Park Authority work with landowners and land managers to: Establish woodland creation projects (that they can fully fund for projects over a certain size) to capture and store carbon; Survey and restore peatland that is not currently under active restoration to capture and store carbon; Fund capital works that look to reduce emissions from the farming sector and increase biodiversity and; Protect and improve soils.

They work with both North Yorkshire County Council and district councils to facilitate the roll out of Electric Vehicles in deeply rural areas, including securing funding for community groups to install electric vehicle charging points.

As the delegated planning authority for the National Park they are looking at how they can develop best practice for the retrofit of listed properties – of which there is a high concentration within the North Yorkshire Moors National Park.

Website: [www.northyorkmoors.org.uk](http://www.northyorkmoors.org.uk)  
Contact: Tom Stephenson  
Email: [t.stephenson@northyorkmoors.org.uk](mailto:t.stephenson@northyorkmoors.org.uk)

### **John and Luke's Eco-Friendly Market Place**

An eco-friendly refill shop in Scarborough which seek to reduce the use of single plastics and promote reusing, recycling and reducing waste. They are looking to work with local schools and the community to raise awareness. They can provide space within the shop and are interested in co-working to generate new ideas.

Website: [www.johnandlukesecofriendly.co.uk](http://www.johnandlukesecofriendly.co.uk)  
Contact: John Jagger  
Email: [info@johnandlukesecofriendly.co.uk](mailto:info@johnandlukesecofriendly.co.uk)



## Thornton Le Dale Village Hall



Thornton Le Dale Village Hall remains unchanged since it was built some ninety years ago. They have a target of total decarbonisation of the village hall which will include installing solar panels on the roof, battery storage and an infra-red heating system to enable as much energy self sufficiency as possible. A current building project includes a new entrance extension to provide level access, a new toilet block

and kitchen to improve hygiene, wall and roof insulation and other improvements to enhance community use and decarbonisation of the building.

Website: <https://tledvillagehall.co.uk>  
Contact: David Andrews  
Email: [d.andrews99@gmail.com](mailto:d.andrews99@gmail.com)

## Ruswarp Village Hall

Ruswarp Village Hall near Whitby provides a building for a variety of community uses. They have experience in ground and air source heat pumps and solar panels which could be share with others

Contact: Anne Bourner  
Email: [bourner37@gmail.com](mailto:bourner37@gmail.com)

## Scarborough Borough Council

Scarborough Borough Council have a climate change strategy covering its ambitions to tackle climate change both through their own emissions and place shaping roles (<https://www.scarborough.gov.uk/home/community-and-living/climate-change-strategy>).

A review of recent progress can be found here: <https://democracy.scarborough.gov.uk/ieListDocuments.aspx?CIId=902&MIId=14241>.

Their main activities include the upcoming roll out of EV charge points into Council car parks, the delivery of government funded domestic retrofit projects, Town Deal green projects including Carbon Neutral Village and Green Construction Skills Village, supporting Circular Scarborough and planning for electric transport hubs.

They are able to provide information support, project planning support and support with completing external funding bids.

Website: <https://scarborough.gov.uk>  
Contact: Harry Baross  
Email: [harry.baross@scarborough.gov.uk](mailto:harry.baross@scarborough.gov.uk)



## CLIMATE CHANGE ADAPTATION PROJECTS/ACTIVITIES

### KindleWoods Community Interest Company (CIC)



*Planting 600 hedgerow trees in bare gaps, Nov 2021 stakes.*



*Hazel harvested used for hedge stakes.*

KindleWoods CIC is a woodland Social Enterprise based in a beautiful six acre woodland near Thirsk. The woodland was planted by a community group twenty years ago and they involve people in chopping wood, lighting campfires and having time and space in the wood to help people connect with nature in ways which empower and inspire them to be further involved. KindleWoods is passionate about nature, community and wellbeing and projects address the root causes of major environmental and social challenges. They work with nature in a sustainable way, engaging the local community to educate and create a passion for the environment and improve wellbeing. They deliver woodland wellbeing programmes, support adults and young people experiencing mental health challenges and they are currently working with the military and local authority. They run sustainable land management projects including community seed collection and tree planning in partnership with White Rose Forest.

They have been commissioned by the White Rose Forest to lead on the co-ordination of community acorn collection for the Royal Forest of Knaresborough. They are also providing community tree planting challenge event days with local groups and businesses in partnership with the White Rose Forest. They run a hedge laying service and sustainably manage a woodland including harvesting wood through coppicing.

They operate across North Yorkshire and can provide woodland training events to support groups to connect with nature and the bigger meaning of climate action. They also run corporate days.

Website: <https://kindlewoods.com>  
Contact: Katie Rees  
Email: [katie@kindlewoods.com](mailto:katie@kindlewoods.com)

## **Weaponness Valley Community Group**

They describe themselves as community environmental volunteers who undertake tree and shrub hedge planting, orchard maintenance, opening up walking and cycling public rights of way as well as hedgehog hibernation across the Weaponness Valley. They are also able to support local historic garden restoration.

Contact: Mick Prince  
Email: [Mickprince1@outlook.com](mailto:Mickprince1@outlook.com)

## **Climate Action Stokesley**

Climate Action Stokesley aims to help communities in Stokesley and surrounding villages to take action on climate change by supporting and developing local initiatives to reduce carbon emissions or adapt to the changing climate. Their range of climate action activities include: Helping to organise the planting of 2500 trees; Seed stalls and an open garden to encourage people to grow their own food; Running four wildflower walks and two bug hunts for children; Working with Great Ayton Parish Council and Brighten Up Great Ayton on improving the biodiversity of the area as part of their pollinators plan; Partnership work with Rudby Parish Council on their Trees for Tomorrow campaign and their Climate Change Survey. Work with Stokesley Town Council – No Mow May and Let it Bloom in June; Work with Christ Church – an eco-church, Great Ayton and work with Yatton House to develop a community garden.

Whilst their time and capacity are limited they have supported new groups on how to organise and are currently working with other groups and the local council to develop a coordinated approach across North Yorkshire.

Website: <https://climateactionstokesleyandvillages.org>  
Contact: Caryn Loftus  
Email: [climteactionsav@gmail.com](mailto:climteactionsav@gmail.com)

## **CLIMATE CHANGE AWARENESS RAISING PROJECTS/ACTIVITIES**

### **Ryedale Environmental Group (REG)**

REG is a developing grass roots organisation helping local communities to reduce Ryedale's carbon footprint, promoting positive projects to reduce environmental impacts across the district. Their mission is to enable environmental change across Ryedale through autonomous actions and also by providing practical advice and assistance to local environmental groups, parish, town and district councils. REG is an umbrella organisation for established environmental groups such as Kirkbymoorside and Hovingham, as well as fledgeling groups including Malton/Norton/Pickering and Kirby Misperton. New groups are encouraged to join and a forum has developed via monthly meetings to share successful initiatives and brainstorm new ideas. REG is strictly apolitical and welcomes new members from all political persuasions and walks of life. REG is developing strategies to engage a 'young voice' and to reach out to those under 25 years of age.

Their climate action activities include: alternative recycling, wildflower planting, product swaps, waste reduction and advocating for environmental action. They are able to offer advice and manpower across the Ryedale district. They have produced a Green Guide - <https://ryedaleenvirogroup.co.uk/wp-content/uploads/2022/02/Ryedale-Green-Guide-V3-25.02.22.docx-2.pdf> and deliver Inspirational environmental talks with special guests hosted by Ryedale Environmental Group. All talks take place via Zoom - <https://ryedaleenvirogroup.co.uk/reg-talks/>

Website: <https://ryedaleenvirogroup.com>  
Contact: Peter Winter  
Email: [ryedaleeg@hotmail.com](mailto:ryedaleeg@hotmail.com)

### **Climate Action Stokesley**

Climate Action Stokesley aim to help communities in Stokesley and surrounding villages to take action on climate change by supporting and developing local initiatives to reduce carbon emissions or adapt to the changing climate. Their activities to raise awareness around climate action include: writing and meeting with local MPs and Councillors, worked across the region with other environmental groups, holding meetings, stalls, events, visits, open houses and attending online seminars on environmental issues, liaison with local businesses working on climate change and nature emergency e.g. Rounton Coffee and Labman and working with Stokesley School's green group.

Website: <https://climateactionstokesleyandvillages.org>  
Contact: Caryn Loftus  
Email: [climteactionsav@gmail.com](mailto:climteactionsav@gmail.com)

## **Circular Coast Clothing**

Circular Coast Clothing operates in Scarborough and makes use of clothes, shoes or accessories that can be repaired, restored or redesigned with the intention to be used and circulated responsibly and effectively for as long as possible. Using a #Wearcarerepair membership scheme they aim to influence a change in fashion. Circular Coast Clothing recovers unused and unwanted textile fabrics that would otherwise end up in landfill and work with communities to create community projects and to change the mindset around sustainable fashion. They plan to open a Restore Textile Scrap store to challenge the way people shop, using re-sale and to operate clothes rental in their future.

Website: [https:// facebook.com/circularcoastclothing](https://facebook.com/circularcoastclothing)  
Contact: Emma Teasdale  
Email: [circularcoastclothing@gmail.com](mailto:circularcoastclothing@gmail.com)

## **The Guide Association – North Yorkshire, North East**

The Guide Association describes itself as a leading charity for young girls and women in the UK. With support from 100,000 amazing volunteers they are active in every part of the UK, giving girls and young women a space where they can be themselves, have fun, build brilliant friendships, gain valuable life skills and make a positive difference to their lives and their communities. They build girls' confidence and raise aspirations. They give girls and young women the chance to discover their full potential and encourage them to be a powerful force for good. Their climate action projects include working with groups to raise awareness of environmental issues, taking part in recycling schemes, litter picking and various other environmental projects at a local level.

Contact: Ali Hampshire  
Email: [admin@girlsguidingnyne.org.uk](mailto:admin@girlsguidingnyne.org.uk)

Other examples, uncovered during this research, but which did not want their details included in this report included:

- A community network who campaign on issues such as the creation of a cycle network/infrastructure for the town, more green spaces and improved public transport to reduce car usage and pollution.
- A Council run art gallery which held an exhibition with associated creative workshops to raise awareness of environmental issues and actions that can be taken to improve/reduce our impact on the environment. The workshops involved schools, community groups and the general public – mainly families.
- An organisation which uses sport and physical activity for positive change and which has a group for 'Active travel and climate change'.

## RESPONDENTS JUST WANTING TO KNOW MORE

Six survey respondents came from organisations/groups just wanting to know more about climate change and these included:

<b>Name</b>	Demesne Farm Holiday Cottages
<b>Description</b>	Provider of five holiday cottages.
<b>Interested in</b>	Finding out about local climate change networks, projects and activities
<b>Support needs</b>	Advice
<b>Website</b>	<a href="http://www.demesnefarmhc.co.uk">www.demesnefarmhc.co.uk</a>
<b>Contact</b>	Alan Bancroft
<b>Email</b>	<a href="mailto:Jhb49@hotmail.com">Jhb49@hotmail.com</a>

<b>Name</b>	Ugthorpe Village Community Fund
<b>Description</b>	A committee raising funds through local community events primarily to upgrade the village hall
<b>Interested in</b>	Finding out about local climate change networks, projects and activities  Knowing more about how to implement climate change adaptations.
<b>Support needs</b>	Help with replacing rotting wooden windows with more efficient upvc and replacing lighting with led.
<b>Website</b>	-
<b>Contact</b>	John Gallon
<b>Email</b>	<a href="mailto:j47gallon@gmail.com">j47gallon@gmail.com</a>

<b>Name</b>	Scotton Village Hall
<b>Description</b>	Village Hall run by trustees as a charity.
<b>Interested in</b>	Knowing more about how to implement climate change adaptations.
<b>Support needs</b>	An understanding of the subject
<b>Website</b>	-
<b>Contact</b>	Mike Harris
<b>Email</b>	<a href="mailto:havikilpark@gmail.com">havikilpark@gmail.com</a>

<b>Name</b>	Ebberston Village Hall
<b>Description</b>	Ebberston Village Hall management committee provides a building for community use, supported by hire and other fundraising events.
<b>Interested in</b>	Knowing more about how to implement climate change adaptations.
<b>Support needs</b>	They want to upgrade to solar panels for hot water if not also heating, but do not have the necessary funds to do so and would like a list of potential funding (match funding) sources.
<b>Website</b>	-
<b>Contact</b>	Mike Harris
<b>Email</b>	<a href="mailto:havikilpark@gmail.com">havikilpark@gmail.com</a>

<b>Name</b>	Furniture Works
<b>Description</b>	Recycling and upcycling furniture.
<b>Interested in</b>	<p>Finding out about local climate change networks, projects and activities.</p> <p>Knowing more about how to implement climate change adaptations.</p> <p>Understanding more about climate change mitigation.</p> <p>Support with creating connections between existing environmental VCSE organisations and the wider VCSE sector to create a movement of climate action activity across North Yorkshire.</p>
<b>Support needs</b>	Information, advice and guidance
<b>Website</b>	<a href="http://www.furnitureworksny.co.uk">www.furnitureworksny.co.uk</a>
<b>Contact</b>	Sarah Thornton
<b>Email</b>	<a href="mailto:furnitureworksny@gmail.com">furnitureworksny@gmail.com</a>

<b>Name</b>	Slingsby Website and Newsletter Group
<b>Description</b>	Run the community website and the newsletter 'The Triangle' for the benefit of the parish.
<b>Interested in</b>	<p>Finding out about local climate change networks, projects and activities.</p> <p>Support with creating connections between existing environmental VCSE organisations and the wider VCSE sector to create a movement of climate action activity across North Yorkshire.</p>
<b>Support needs</b>	They will get support from Ryedale Environmental Group
<b>Website</b>	<a href="http://www.slingsbyvillage.co.uk">www.slingsbyvillage.co.uk</a>
<b>Contact</b>	Jon Boots
<b>Email</b>	<a href="mailto:admin@slingsbyvillage.co.uk">admin@slingsbyvillage.co.uk</a>

## Appendix 1 - Copy of the introductory email and survey questions



### Community First Yorkshire Climate Action Survey 2022

Community First Yorkshire has commissioned CoLibra Ltd to research the range, location, types and appetite for climate change activities, projects and networks across Scarborough and the North Yorkshire Moors National Park. We would therefore be most grateful if you could complete this short survey, which should take no longer than ten minutes. We want to hear from:

- (i) Groups/organisations who are interested in implementing climate action projects and;
- (ii) Groups/organisations who are already involved in delivering climate action projects – no matter how small.

The deadline for responding is **Friday 23<sup>rd</sup> September 2022**.

#### Through this survey we hope to generate a snapshot of current activities to:

- Understand the range, location and type of community-based climate change activities, projects and services currently being delivered.
- To identify activities which focus on mitigating climate change.
- To identify activities which focus on adaptation to climate change.
- To identify activities which raise awareness of climate change, and which promote climate mitigations and adaptations.

#### and to gauge levels of interest so that we can:

- Assess the likely community appetite and ambitions for undertaking climate change activities.
- Understand local barriers and enablers to community-based climate action.
- Understand future support needs.

#### By taking part you will:

- Help raise awareness of the various community-based climate action projects taking place.
- Register your interest in knowing more about how your group/organisation could implement climate change activities.
- Profile your organisation's/group's climate change activities.
- Provide inspiration to others.
- Help us to better understand key barriers and enablers and likely support needs.

You can find more about Community First Yorkshire's data protection policy and how your information will be used **here**: <https://www.communityfirstyorkshire.org.uk/wp-content/uploads/2022/08/220824-Data-protection-and-how-your-information-will-be-used-Climate-Action-Survey.pdf>

---

Name

Organisation/Group

Address

Postcode

Email

Website

Twitter

Instagram

Facebook

Tel

**1. Please provide a brief description of your organisation/group.**

--

(Limited to 500 characters including spaces)

**2. Does your organisation/group deliver any climate change activities or projects?**

Yes	<input type="checkbox"/>
No	<input type="checkbox"/>

If no please go to question 6.

**3. If yes, which of the following three categories best describes your activities?:**

***Climate change mitigation*** by which we mean making the impacts of climate change less severe by preventing or reducing the emission of greenhouse gases (GHG) into the atmosphere.



For example, renewable energy schemes, installing electric vehicles charging points, diverting food from landfill through upcycling surplus food to feed the community, building environmentally sustainable buildings/homes, installing green roofs on community buildings, undertaking energy audits on community buildings, or working towards being a carbon neutral community.

Please provide summary details (limited to 500 characters including spaces)

- **Climate change adaptation** by which we mean anticipating the adverse effects of climate change and taking appropriate action to prevent or minimise the damage they can cause.

For example, creating wildlife friendly spaces, building flood defences to protect against sea-level rises and flooding and tree/forest planting schemes to capture and store carbon.

Please provide summary details (limited to 500 characters including spaces)

- **Raising awareness of climate change**, by which we mean providing advice and information, signposting and referrals vis-à-vis climate change.

For example, Energy Doctor schemes, encouraging SMART meter roll-out, campaigns that get everyone talking about climate change or lobbying/advocating for climate change action to organisations or individuals in positions to make much larger impacts.

Please provide summary details (limited to 500 characters including spaces)

4. **Would you be interested in supporting others to develop climate action projects and activities?**

Yes	
No	

5. **If you answered yes to question 4, how might you be able to help?** (Limited to 500 characters including spaces)

--

**6. If you are not currently delivering climate action projects/activities, would you be interested in any of the following:**

Area	Yes	No
Finding out about local climate change networks and activities.		
Knowing more about how your organisation/group can implement climate change adaptations.		
Understanding more about climate change mitigation.		
Support with creating connections between existing environmental VCSE organisations and the wider VCSE sector to create a movement of climate action activity across North Yorkshire		

**7. What are the barriers to undertaking climate change activities? (Limited to 500 characters including spaces)**

--

**8. What support do you need which would enable you to undertake climate change activities? (Limited to 500 characters including spaces)**

--

**Consent**

Following this research, a report will be produced for Community First Yorkshire providing details on the range, location and types of community based climate action projects and activities uncovered. This report will be in the public domain.

Do you consent to the inclusion of your organisational/group and contact details being included in the report being produced for Community First Yorkshire?

Yes	
No	

Do you consent to Community First Yorkshire contacting you about climate change activities and developments in the future?

Yes	<input type="checkbox"/>
No	<input type="checkbox"/>

Do you consent to CoLibra contacting you to find out more about your climate change activities?

Yes	<input type="checkbox"/>
No	<input type="checkbox"/>

## Appendix 2 - List of stakeholders, partner organisations and funders

Organisation	Contact	Email
The Key Fund	Dave Thornett	<a href="mailto:Dave.thornett@thekeyfund.co.uk">Dave.thornett@thekeyfund.co.uk</a>
Woodsmith Foundation	Leah Swain	<a href="mailto:Leah.swain@woodsmithfoundation.org.uk">Leah.swain@woodsmithfoundation.org.uk</a>
Two Ridings Community Foundation	Roxanne Wood	<a href="mailto:rwood@tworidingscf.org.uk">rwood@tworidingscf.org.uk</a>
“	Katherine Odom	<a href="mailto:kodom@tworidingscf.org.uk">kodom@tworidingscf.org.uk</a>
National Lottery Community Fund	Jenny Whitmore	<a href="mailto:Jenny.Whitmore@tnlcommunityfund.org.uk">Jenny.Whitmore@tnlcommunityfund.org.uk</a>
North Yorkshire Moors National Park Authority	North Yorkshire Moors National Park Authority	<a href="mailto:general@northyorkmoors.org.uk">general@northyorkmoors.org.uk</a>
North East and Yorkshire Net Zero Hub	Anon	<a href="mailto:contact@communityenergysouth.org">contact@communityenergysouth.org</a> <a href="mailto:enquiries@NEYhetzerohub.com">enquiries@NEYhetzerohub.com</a>
LEP	Anon	<a href="mailto:support@ynygrowthhub.com">support@ynygrowthhub.com</a>
Helmsley Sports Club	anon	<a href="mailto:helmsleyssc@gmail.com">helmsleyssc@gmail.com</a>
Northern Powergrid	Anda Baumerte	<a href="mailto:Anda.Baumerte@Northernpowergrid.com">Anda.Baumerte@Northernpowergrid.com</a>
Community Energy England	<a href="mailto:info@communityenergyengland.org">info@communityenergyengland.org</a>	<a href="mailto:info@communityenergyengland.org">info@communityenergyengland.org</a>
Scarborough Council	Harry Baross	<a href="mailto:Harry.Baross@scarborough.gov.uk">Harry.Baross@scarborough.gov.uk</a>
Tees Valley	Alan Millar	<a href="mailto:Alan.milla@teesvalley-ca.gov.uk">Alan.milla@teesvalley-ca.gov.uk</a>
CFY	Amy Gibbons	<a href="mailto:gibbons.amy@communityfirstyorkshire.org.uk">gibbons.amy@communityfirstyorkshire.org.uk</a>
CFY	Leah Furniss	<a href="mailto:Furniss.Leah@communityfirstyorkshire.org.uk">Furniss.Leah@communityfirstyorkshire.org.uk</a>
Hovingham Purple Project	Anon	<a href="mailto:projectpurple@hovingham.org.uk">projectpurple@hovingham.org.uk</a>
Ryedale Environmental Group	Anon	<a href="mailto:ryedaleEG@hotmail.com">ryedaleEG@hotmail.com</a>
NYCC SC Manager for Ryedale and the Moors	Paddy Chandler	<a href="mailto:paddy.chandler@northyorks.gov.uk">paddy.chandler@northyorks.gov.uk</a>
NYCC SC Manager for Scarborough and district	Karen Atkinson	<a href="mailto:karen.atkinson@northyorks.gov.uk">karen.atkinson@northyorks.gov.uk</a>
NYCC SC Manager for Hambleton	Adele Wilson-Hope	<a href="mailto:adele.wilson-hope@northyorks.gov.uk">adele.wilson-hope@northyorks.gov.uk</a>
Social Enterprise International	Cliff Southcombe	<a href="mailto:cliff@socialenterprise.co.uk">cliff@socialenterprise.co.uk</a>
CAVCA	David Stone	<a href="mailto:david.stone@cavca.org.uk">david.stone@cavca.org.uk</a>